

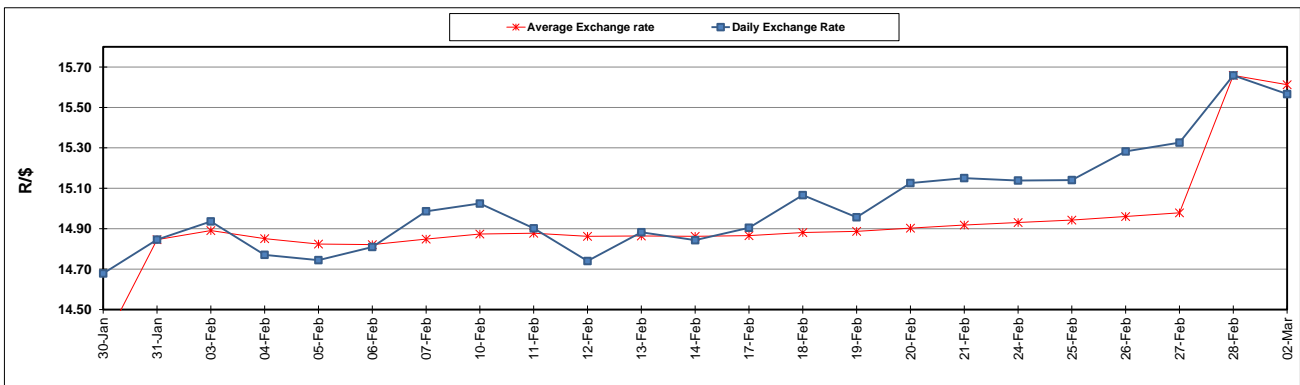
	PETROL 95 ULP	PETROL 93 ULP & LRP	DIESEL 0.05%	DIESEL 0.005%	ILL. PAR.
GAUTENG PUMP PRICE (SA c/l) AS FROM 04/03/2020	1,584.000	1,552.000	-	-	-
WHOLESALE PRICE (SA c/l) AS FROM 04/03/2020	-	-	1,403.260	1,408.660	856.728
SINGLE NATIONAL MAXIMUM RETAIL PRICE	-	-	-	-	1,085.000
BASIC FUEL PRICE - 02/03/2020 (SA c/l)	615.058	602.781	645.996	650.210	625.664
PRESS RELEASE CONTRIBUTION TO BFP 28/02/2020 - 02/03/2020 (SA c/l)	686.970	664.970	737.630	743.030	734.128
UNIT OVER/(UNDER) RECOVERY - 28/02/2020 (SA c/l)	71.912	62.189	91.634	92.820	108.464
AVERAGE BASIC FUEL PRICE 28/02/2020 - 02/03/2020	614.057	601.744	641.243	645.397	622.769
AVERAGE UNIT OVER/(UNDER) RECOVERY 28/02/2020 - 02/03/2020	72.914	63.227	96.387	97.633	111.360

### ANALYSIS MOVEMENT OF AVERAGE OVER/(UNDER) RECOVERY

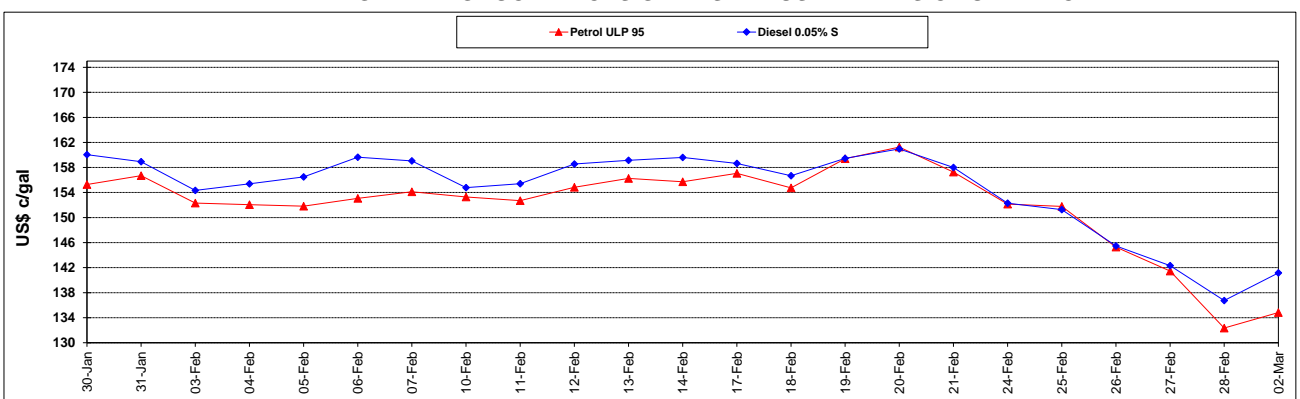
	PETROL 95	PETROL 93	DIESEL 0.05%	DIESEL 0.005%	ILL. PAR.
- MOVEMENT IN INTERNATIONAL PRODUCT PRICES	97.833	87.646	122.410	123.825	136.633
- MOVEMENT IN EXCHANGE RATE	(24.920)	(24.420)	(26.023)	(26.192)	(25.274)
AVERAGE UNIT OVER/(UNDER) RECOVERY 28/02/2020 - 02/03/2020	72.914	63.227	96.387	97.633	111.360

**R/\$ EXCHANGE RATE - (R/\$ 15.5663 - 02/03/2020)**

### EXCHANGE RATE USED IN BASIC FUEL PRICE



### INTERNATIONAL PRODUCT PRICES OF BASKET USED IN BASIC FUEL PRICE



### BASIC FUEL PRICE IN SA CENTS PER LITRE

